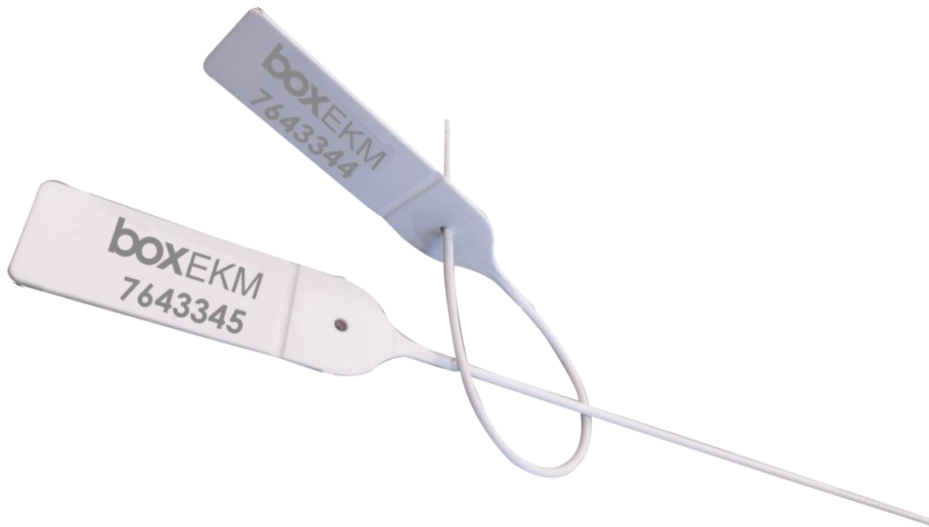


# Jupiter seal 2x280 mm

Pull-tight plastic seal with metal insert



## Specifications

- Polypropylene seal with metal insert
- Size: 2x280 mm
- Tensile strength: 15 kgf
- Working temperature: -20°C +80°C
- Marking: laser
- Progressive numbering up to 7 digits
- Customisation up to 7 characters on one line
- Logo, barcode or Qr code upon request
- Available colours: white, yellow, red, blue, green and pink
- Further colours may be manufactured upon request

*Specifications and design are subject to change without any notice or obligation from the manufacturer*

## Packaging

- Box with 5000 seals
- Box size: 38x30x60cm
- Box weight: 9.5kg

CUSTOMS CODE: 39269097

